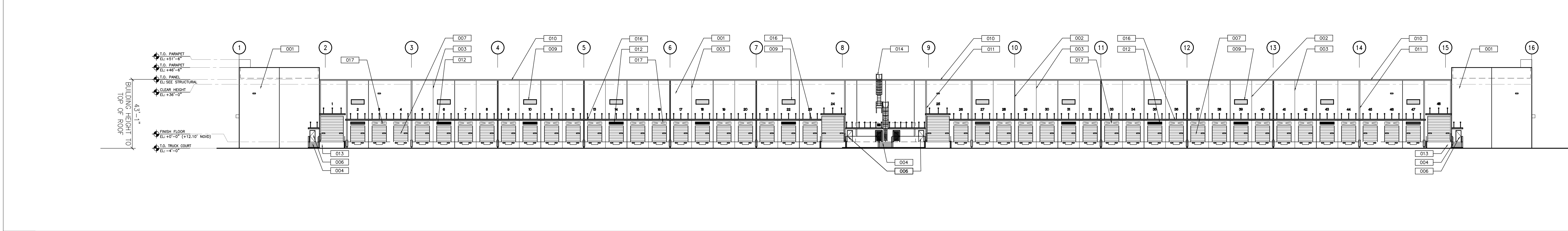


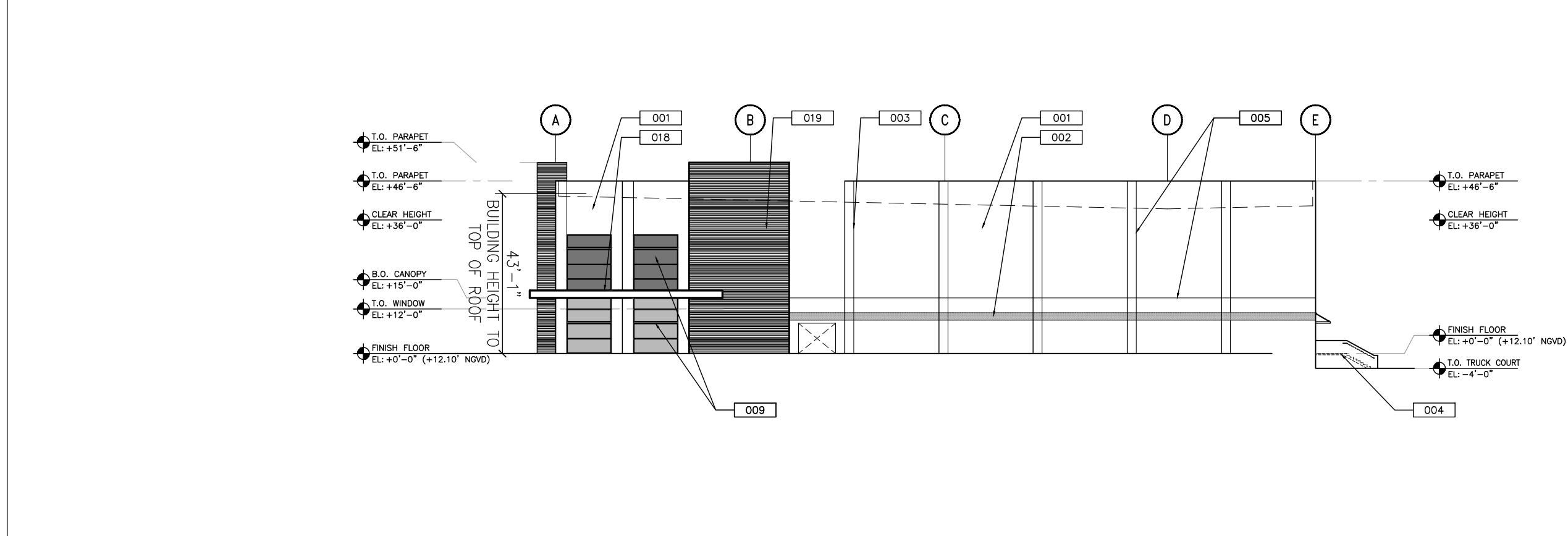
4 ELEVATION – WEST

A3.00 SCALE: 1/32" = 1'-0" 0 16 32 64



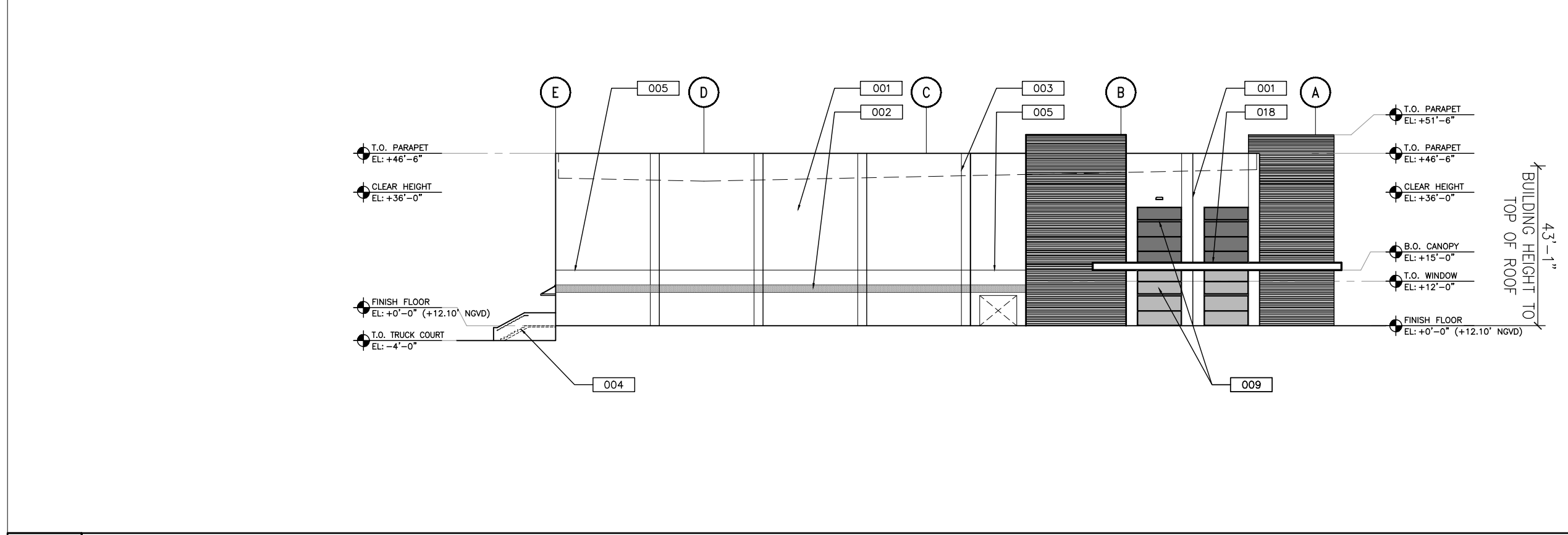
2 ELEVATION – EAST

A3.00 SCALE: 1/32" = 1'-0" 0 16 32 64



3 ELEVATION – SOUTH

A3.00 SCALE: 1/32" = 1'-0" 0 16 32 64



1 ELEVATION – NORTH

A3.00 SCALE: 1/32" = 1'-0" 0 16 32 64

LEGEND

- 001 TILT-UP CONC. WALL W/ TEX-COTE FINISH.
- 002 3/4" PANEL RECESS
- 003 PANEL JOINT (TYPICAL)
- 004 CONCRETE STAIRS
- 005 TYPICAL 3/4" REVEAL
- 006 GALV. STL. DOOR (PAINTED)
- 007 GAL. STL. OVER HEAD DOOR (PAINTED)
- 008 ALUMINUM STOREFRONT DOORS
- 009 ALUM. STOREFRONT
- 010 8"x8" GALV. MTL. GUTTER W/ DRIP EDGE
- 011 8"x8" GALV. MTL. DOWNSPOUT
- 012 APPROVED METAL LOUVER
- 013 DRIVE IN RAMP
- 014 GALV. STL. ROOF ACCESS LADDER (PRIMED AND PAINTED WHITE)
- 015 TYP. SIGNAGE LOCATION
- 016 PRE-FABRICATED METAL CANOPY
- 017 FUTURE KNOCK-OUT PANEL
- 018 ENGINEERED CONCRETE CANOPY
- 019 FORMED LINER PATTERN ON TILT-UP CONCRETE PANEL
- 020 FLUSH MOUNTED FIRST INDUSTRIAL LOGO

CLIENT
**FIRST INDUSTRIAL
REALTY TRUST**

ONE NORTH WACKER DRIVE, SUITE 4200
CHICAGO, IL 60606

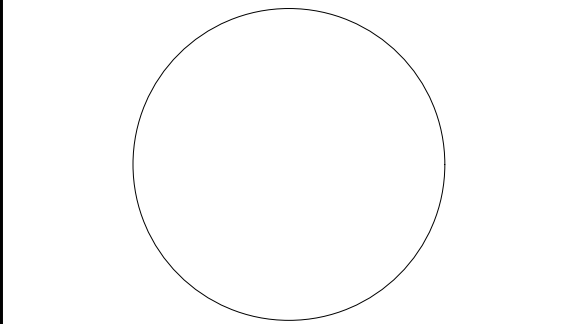
COPYRIGHT
This drawing has been prepared solely for the intended use, thus any reproduction or distribution for any purpose other than authorized by Arcadis is forbidden. Written dimensions shall have precedence over scaled dimensions. Contractors shall verify and be responsible for all dimensions and conditions on the job, and Arcadis shall be informed of any variations from the dimensions and conditions shown on the drawing. Shop drawings shall be submitted to Arcadis for general conformance before proceeding with fabrication.

Arcadis Professional Services (USA) Inc.

ISSUES	
0 DRC SUBMITTAL	08/27/25
1 DRC COMMENT RESPONSES	10/15/25

PRINT COPIES OF THIS DOCUMENT ARE NOT CONSIDERED SIGNED AND SEALED AND THE SIGNATURE MUST BE VERIFIED ON ANY ELECTRONIC COPIES.

SEAL



7000 North Federal Hwy.
Boca Raton, FL 33487
Tel 561 393 6555, Fax 561 395 0007
www.arcadis.com

PROJECT
**FIRST 95 PHASE 2
SITE PLAN APPROVAL**

TBD
POMPAN0, FLORIDA

PROJECT NO:
30292680
DRAWN BY:
JPM
CHECKED BY:
JC
PROJECT MGR:
SB
APPROVED BY:
JJ/JC

SHEET TITLE

**ELEVATIONS -
BLDG A**

**SHEET
NUMBER**
A3.00
ISSUE
0

AAC

PZ25- 12000030
01/06/2026